

## Water-Cooled Semi-Automatic MIG Torches

For Models

**450PG, 607GW/PG**



**AMERICAN WELDQUIP, INC.**

1375 Wolf Creek Trail

Sharon Center, Ohio 44274

Telephone: (330) 239-0317

Fax: (330) 239-0031

[www.weldquip.com](http://www.weldquip.com)

**INSTALLATION, OPERATIONS AND REPLACEMENT PARTS MANUAL**

## **TABLE OF CONTENTS**

INTRODUCTION/WARRANTY .....	1
GENERAL SAFETY.....	2
TORCH SPECIFICATIONS.....	2
NOZZLE/TIP RELATIONSHIPS .....	3
INSTALLATION .....	3
LINER REPLACEMENT .....	4
GOOSENECK REPLACEMENT .....	5
TRIGGER SWITCH REPLACEMENT.....	5
UNICABLE REPLACEMENT .....	5
DAILY MAINTENANCE .....	6
OPTIONS.....	6
PARTS BREAKDOWN .....	7-8

## **INTRODUCTION**

Thank you for purchasing an American Weldquip product. The American Weldquip product you have purchased has been carefully manufactured, assembled, and fully tested. This manual contains information on the installation, operation, maintenance, and replacement part breakdown. Please read, understand, and follow all safety instructions, warnings and procedures. Keep this manual handy for referencing installation, operation, maintenance, and part ordering information. While every precaution has been taken as to the accuracy in this manual, American Weldquip, Inc. assumes no responsibility for errors or omissions. American Weldquip, Inc. assumes no liability for damages resulting from the use of the information contained in this manual. American Weldquip, Inc. shall have no liability to the buyer for consequential damages or expenses by any defect whatsoever.

## **WARRANTY**

AMERICAN WELDQUIP equipment and parts are warranted to be free of defects in material and/or workmanship for the period of time listed below. For any product found to be defective under normal use, AMERICAN WELDQUIP, INC. at their option, will repair, replace, or issue a credit for the value of the defective product. All warranty claims must be submitted by the original purchaser. Use of non-genuine AMERICAN WELDQUIP parts and/or consumables may damage and/or severely limit the performance of the equipment which may limit or void any warranties. AMERICAN WELDQUIP, INC. will not assume responsibility for incidental damages or expenses related to any defect.

A Return Authorization Number (RA#) must be attained from the factory for any product being returned for Warranty Repair or Replacement. All returned product must be shipped freight prepaid by the sender. No- charge replacements, repaired products, or credit will be issued, once the returned product has been evaluated and warranty condition has been verified. If an immediate replacement is required before proper warranty evaluation, a purchase order number is required and the goods will be invoiced. A credit will be issued once it is determined that a warranty condition exists.

<b>MIG TORCHES and Components</b>	<b>= 120 Days</b>
<b>MIG Torch Trigger Switches (Contacts only) -Excludes Smoke Extraction and Pistol Grip</b>	<b>= Lifetime</b>
<b>Robotic Nozzle Cleaning Stations</b>	<b>= 90 Days</b>
<b>Robotic Peripherals, ArcSafe, Wire Cutter, Gun Mounts</b>	<b>= 90 Days</b>
<b>TIG POINT Tungsten Electrode Grinders</b>	<b>= 90 Days</b>

## **GENERAL SAFETY PRECAUTIONS**

Before installing, operating or performing maintenance please read the safety precautions below. Failure to observe safety precautions can result in injury or death.

**WARNING** – A welding arc emits ultraviolet (UV) and other radiation and can cause serious injury to unprotected skin and eyes.

**WARNING** – Hot metal produced by welding can cause severe burns. Heat from arcs and hot weld spatter and sparks can start fires and cause explosions of flammable gases.

**WARNING** – Fumes and gases generated from welding can cause severe injury to respiratory system and even death. **DO NOT** weld in confined spaces and make sure there is plenty of ventilation. Do not breathe fumes and gases as can cause asphyxiation.

**WARNING** – Electrical shock can kill. Do not touch live electrical parts and/or use in damp locations.

1. Always wear a welding helmet with the correct filter and cover plate.
2. Always wear safety Glasses with side shields in any work area even if a welding helmet is also required.
3. All exposed skin should be covered with flameproof protective clothing. This includes leather gloves, heavy long sleeve shirt, cuff less pants and high topped shoes. **DO NOT WEAR CLOTHING MADE FROM FLAMMABLE SYNTHETIC FIBERS.**
4. Protective screens or barriers should be used to protect others from spatter, flash and glare while welding.
5. Make sure work area is free of all combustible materials or cover with a protective non-flammable cover.
6. Remove all flammable gas cylinders as welding sparks can cause explosion in the event of a leak. Take serious precautions if welding in area of flammable gas lines and/or tanks.
7. Know where a fire extinguisher is at all times. The best practice is to have an extinguisher, water pail, fire hose and/or sand bucket available for immediate use.
8. Poorly maintained equipment can cause injury or death
9. Inspect, repair or replace worn or damaged welding cables and torch leads.
10. Insure equipment is properly grounded and installed according to code.
11. Never wrap the weld cable or torch leads around your body.
12. Make sure equipment is turned off when not in use.

### **ADDITIONAL SOURCES FOR SAFETY INFORMATION**

ANSI Standard Z49.1 CODE FOR SAFETY IN WELDING AND CUTTING - American National Standards Institute, 1430 Broadway, New York, NY 10018

NFPA Standard 51B, "Fire Prevention in the Use of Cutting and Welding Processes – National Fire Protection Association, Batterymarch Park, Quincy, MA 02269

CSA Standard W117.2 CODE FOR SAFETY IN WELDING AND CUTTING - Canadian Standards Association, Standards Sales, 178 Rexdale Boulevard, Rexdale, Ontario, Canada M9W 1R3.

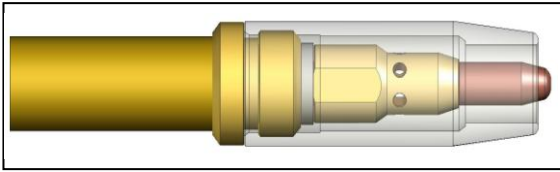
## **TORCH SPECIFICATIONS**

MODEL	AMPERAGE	100% Duty Cycle		60% Duty Cycle	
		CO2	Mixed Gas	CO2	Mixed Gas
450PG	450	400A	350A	450A	400A
607GW/PG	600	600A	500A	625A	600A

Duty Cycle is based on a complete cycle time of 10 minutes. (60% Duty Cycle = 6 minutes weld time, 4 minutes off time).

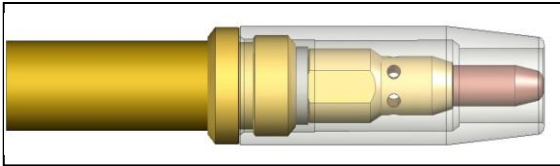
## **NOZZLE/TIP RELATIONSHIPS**

Shown below are typical relationship between the contact tip and nozzle in GMAW Semi-Automatic applications. Nozzles to tip relationships are usually dictated by the process and application but not necessarily the standard. Keep in mind that decreased tip life, increased spatter cleaning cycles may be required if the tip relationship is changed to achieve other objectives.



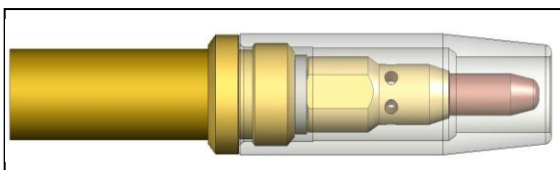
### **Extended Tip – Short Circuit (Short Arc, Dip Transfer) Welding Applications**

The tip stick out is usually 1/8" or 1/4" from the nozzle. Keep in mind that the further the stick out the more susceptible to gas porosity issues. Typically is used in short circuit, lower amperage applications, and/or where you may need to reach in to a corner.



### **Flush Tip – Higher current Short Circuit (Short Arc, Dip Transfer) Welding Applications**

The tip is flush with the end of the nozzle. Typically used in higher current and voltage short circuit applications.



### **Recessed Tip – Spray Arc, Pulsed, Flux Core Welding Applications**

The tip is usually recessed in the nozzle 1/8" or 1/4". Usually, the higher the heat and/or current the further the recess. However, this is also dependant on the wire used and the arc length requirement.

## **INSTALLATION**

Depending on how your torch was ordered your American Weldquip torch has been supplied with either a EURO type feeder connection or a DIRECT wire feeder connection. The American Weldquip torch can be installed to the wire feed unit in two ways.

Euro Connection – Feeder Adaptor Kit may be required

Direct Connection

### ***Direct Connect***

The direct connect torch system is designed for installation to the wire feeder without the need for any adaptor system. The torch is supplied (depending on the torch configuration ordered) with a feeder connection plug at the rear of the torch, gas connection, feeder control cable.

- 1) Fully insert the torch Direct Connection into wire feeder. Tighten screw or other method on wire feeder to secure torch
- 2) Connect the gas hose to barbed fitting on the direct connect pin if required.
- 3) Connect feeder control cable/plug to torch.
- 4) Connect feeder control cable/plug to the feeder.
- 5) Feed welding wire into the torch and tighten drive rolls.

**WARNING: WHEN FEEDING WELD WIRE THROUGH THE TORCH KEEP THE FRONT END OF THE TORCH POINTED AWAY FROM ANY PERSON OR OBJECT. DO NOT POINT AT FACE, HANDS ETC. FAILURE TO DO SO WILL RESULT IN BODILY INJURY AND POSSIBLY DEATH.**

### ***Using Feeder Adaptor Kit***

In some cases it may be desirable to use a feeder adaptor kit such as when using different manufactures wire feed units to commonize on a torch configuration.

- 1) Thread feeder adaptor plug into the adaptor block and tighten.
- 2) Insert the adaptor guide tube into the adaptor plug.

- 3) Fully insert the feeder adaptor assembly into the wire feeder. Tighten screw or other method on wire feeder to secure the adaptor assembly.
- 4) If required, connect the feeder control cable/plug to the wiring on the adaptor assembly.
- 5) Connect feeder control cable/plug to the feeder.
- 6) Connect the torch to the feeder adaptor assembly.
- 7) Feed welding wire into the torch and tighten drive rolls.

**WARNING: WHEN FEEDING WELD WIRE THROUGH THE TORCH KEEP THE FRONT END OF THE TORCH POINTED AWAY FROM ANY PERSON OR OBJECT. DO NOT POINT AT FACE, HANDS ETC. FAILURE TO DO SO WILL RESULT IN BODILY INJURY AND POSSIBLY DEATH.**

## **MAINTENANCE**

### ***Liner Replacement***

There are two types of liners offered – standard and the EASY front loading liner system. The standard liner requires the torch be removed from the feeder in order to be changed. The EASY front load system only requires the removal of the front end consumables.

#### **Standard Liner Maintenance**

**Warnings – To avoid accidental injury ensure power supply and wire feed unit is turned off.**

- 1) Trim the end of the weld wire at contact tip.
- 2) Retract or completely remove weld wire so torch can be removed from the wire feeder.
- 3) Remove the nozzle, contact tip and diffuser.
- 4) Loosen the set screw at the torch feeder connection using a 5/64" Allen wrench.
- 5) Making sure the torch cable is straight, grasp the liner at the rear of the torch with a pair of pliers and remove.
- 6) Carefully feed the new liner into the torch using short strokes to avoid kinking. You may need to twist the liner for easier insertion.
- 7) Tighten the set screw to secure the liner in the torch.
- 8) Reinstall the torch to the wire feed unit.
- 9) **IMPORTANT:** at the front end of the torch push the liner back into the gun and hold in place.
- 10) Trim the liner to ¼" stick out from the end of the gooseneck.
- 11) Replace the Diffuser, contact tip and nozzle.
- 12) Feed welding wire into the torch and tighten drive rolls.

**WARNING: WHEN FEEDING WELD WIRE THROUGH THE TORCH KEEP THE FRONT END OF THE TORCH POINTED AWAY FROM ANY PERSON OR OBJECT. DO NOT POINT AT FACE, HANDS ETC. FAILURE TO DO SO WILL RESULT IN BODILY INJURY AND POSSIBLY DEATH.**

#### **EASY – Front Loading Liner Maintenance**

**Warnings – To avoid accidental injury ensure power supply and wire feed unit is turned off.**

Note: Do not retract or remove weld wire from the torch. Weld wire is used to guide the liner when reinserting.

- 1) Trim the end of weld wire at contact tip.
- 2) Remove the nozzle, contact tip and diffuser.
- 3) Grip the liner at the front end of torch using a pair of pliers and pull out of torch.
- 4) Insert the weld wire from the front of the torch into the liner and carefully feed the new liner into the torch using short strokes to avoid kinking. Make sure liner is fully seated at the rear of the torch. You will feel a slight click when inserted into the liner retainer. You may need to twist the liner for easier insertion.
- 5) **IMPORTANT:** at the front end of the torch push the liner back into the gun and hold in place.
- 6) Trim the liner to ¼" stick out from the end of the gooseneck.
- 7) Replace the Diffuser, contact tip and nozzle.

**WARNING: WHEN FEEDING WELD WIRE THROUGH THE TORCH KEEP THE FRONT END OF THE TORCH POINTED AWAY FROM ANY PERSON OR OBJECT. DO NOT POINT AT FACE, HANDS ETC. FAILURE TO DO SO WILL RESULT IN BODILY INJURY AND POSSIBLY DEATH.**

## Gooseneck Replacement

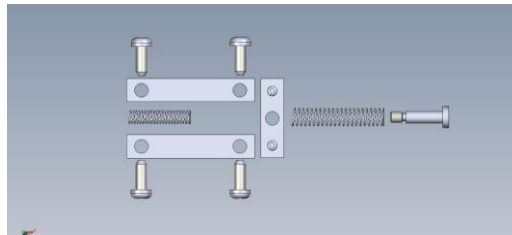
- 1) Secure Gooseneck in a vice.
- 2) Remove the liner from the torch.
- 3) Remove the four handle screws and separate the handle assembly.
- 4) Unthread the power cable from the gooseneck.
- 5) Cut off the clamps from the water line and conduit and pull off of neck assembly. You may have to slit with knife. Note: Cut off as little as possible from these two lines.
- 6) Slide new clamps on the water line and conduit.
- 7) Thread the power cable on the gooseneck and tighten.
- 8) Push the water line and conduit on the gooseneck assembly and crimp the clamps.
- 9) Install the bottom handle assembly (trigger side) onto the gooseneck/cable assembly. The trigger wires will fit in the grooves on the sides of the body insulator. Make sure the trigger wires stay seating in the body insulator and the insulator is fully inserted into the bottom handle.
- 10) Slide the handle spring or cable support up and insert in the rear of the handle.
- 11) Install the top handle and secure with the (4) screws. **IMPORTANT:** Insure the trigger wires are not pinched between the handle.
- 12) Reinstall the diffuser, contact tip and nozzle.

## Trigger Switch Replacement

### CA/GW SERIES TORCHES

The new Trigger Switch Assembly contains –

- 1ea. Trigger Paddle
- 2ea. Springs
- 4ea. Screws – for 2 outer contacts.
- 1ea. Shoulder Screw
- 2ea. Copper Outer Contact Plates
- 1ea. Copper Contact Plate



- 1) Secure Gooseneck in a vice.
- 2) Remove the four handle screws and separate the handle assembly.
- 3) Remove the trigger paddle shoulder screw and spring securing the center copper blade to the trigger paddle. If using the extended trigger there are two screws that secure the trigger paddle and must be removed.
- 4) Remove the (4) screws securing the copper contact assemblies and remove the trigger leads and contacts.
- 5) Using a screwdriver gently push, from the inside of the handle, the trigger paddle where it attaches to the handle and remove the trigger paddle and return spring.
- 6) Insert the return spring (the smaller diameter spring) into the seat on the bottom handle assembly.
- 7) Carefully insert the new trigger paddle into the handle assembly and tap the paddle in on the pivot point in the handle. The Trigger should snap in place.
- 8) Place the copper cross contact on the shoulder screw, then install the remaining spring over the screw, and thread into the trigger paddle until tight. **DO NOT OVER TIGHTEN.**
- 9) Using the (4) four screw provided attach the (2) two outer contact plates and install the (2) two trigger leads under the front contact plate screws.
- 10) Install the bottom handle assembly (trigger side) onto the gooseneck/cable assembly. The trigger wires will fit in the grooves on the sides of the body insulator. Make sure the trigger wires stay seating in the body insulator and the insulator is fully inserted into the bottom handle.
- 11) Slide the handle spring or cable support up and insert in the rear of the handle.
- 12) Install the top handle and secure with the (4) four screws provided. **IMPORTANT:** Insure the trigger wires are not pinched between the handle.

### PG – PISTOL GRIP SERIES TORCHES

- 1) Secure Gooseneck in a vice.
- 2) Remove the six (6) handle screws and separate the handle assembly.
- 3) Remove the trigger from the handle half and remove the trigger wires.
- 4) Reinstall the trigger wires on the new switch assembly.
- 5) Reinstall the trigger assembly inside the handle half.
- 6) Install the top handle half to the bottom handle half. **IMPORTANT:** Insure the trigger wires are not pinched between the handle.
- 7) Reinstall the six (6) handle screws and tighten.

## Cable Assembly Replacement

- 1) Secure Gooseneck in a vice.
- 2) Remove the liner from the torch.
- 3) Remove the four front handle screws and separate the handle assembly.
- 4) Unthread the power cable from the gooseneck.
- 5) Cut off the clamps from the water line and conduit and pull off neck assembly. You may have to slit with knife.
- 6) Slide new clamps on the water line and conduit of the new cable assembly.
- 7) Thread the power cable to the gooseneck and tighten.
- 8) Push the water line and conduit on the gooseneck assembly and crimp the clamps.
- 9) Install two open end terminals to the trigger wire assembly and attached to the screws on the trigger assembly in the bottom handle.
- 10) Install the bottom handle assembly (trigger side) onto the gooseneck/cable assembly. The trigger wires will fit in the grooves on the sides of the body insulator. Make sure the trigger wires stay seating in the body insulator and the insulator is fully inserted into the bottom handle.
- 11) Slide the handle spring or cable support up and insert in the rear of the handle.
- 12) Install the top handle and secure with the (4) screws. IMPORTANT: Insure the trigger wires are not pinched between the handle.
- 13) Reinstall the diffuser, contact tip and nozzle.
- 14) On the rear of the old cable assembly turn and remove the spring guard hand nut and rear support spring and slide back on the cable assembly.
- 15) Remove the screw securing the handle to the feeder pin adaptor and separate the handle.
- 16) Unthread the power cable from the feeder adaptor block.
- 17) Cut off the clamps from the short red water line ( do not discard as reusable) and conduit and pull off. You may have to slit with knife.
- 18) Slide the threaded rear handle support nut and rear support spring onto the new cable assembly.
- 19) Slide new clamps on the short red water line and conduit of the new cable assembly.
- 20) Thread the power cable to the feeder pin adaptor and tighten.
- 21) Push the red water line and conduit on the feeder pin adaptor and crimp the clamps.
- 22) Install the trigger wire using (2) butt splices.
- 23) Install the bottom handle assembly onto the feeder adaptor assembly.
- 24) Carefully route the red and blue water lines and the trigger lead thru the opening in the handle half. Make sure the water lines and trigger wires are not pinched between the handle halves.
- 25) Install the other handle half and screw the rear handle support nut and spring on the rear handle assembly.
- 26) Install the screw on the rear handle and feeder adaptor.
- 27) Reinstall the liner.

## DAILY MAINTENANCE

A few minutes per day performing a quick check of your mig torch will help to decrease weld problems, minimize downtime, and help increase consumable life.

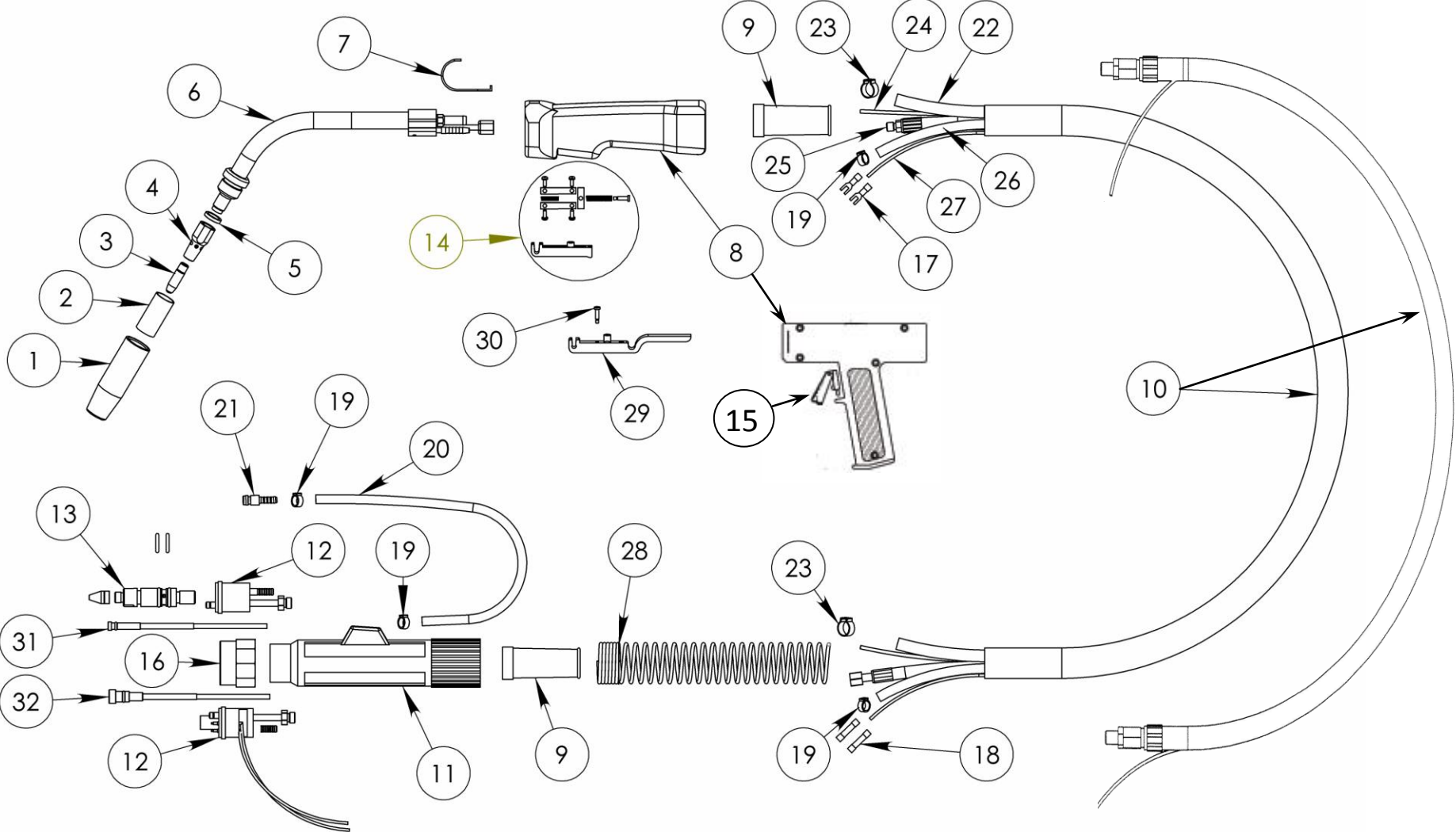
### At Beginning of Shift

- Inspect the cable for cuts, nicks or tears. If you can see bare copper return for maintenance.
- Inspect the front end consumables. Clean weld spatter and inspect the nozzle insulator. If nozzle insulation is damaged it should be replaced.
- Check that the gas diffuser is tight on the gooseneck.
- Check the gas holes on the diffuser and clean if necessary.
- Check and tighten the contact tip.
- Check all electrical connections including the power cable from the power supply, torch/feeder connections, and control cables for loose connections. Tighten if necessary. Loose connections can cause overheating of cables and/or loss of electrical power.

## OPTIONS

<u>Part Number</u>	<u>Description</u>
75000009	Gun Hanger
75000007-ET	Extended Trigger – Includes bottom Handle Half
75000030	Heat Shield

# PARTS BREAKDOWN – 450/607 GW/PG



NO.	DESCRIPTION	450PG	607
1	CONICAL NOZZLE	75004013	75004013
	TAPERED NOZZLE	75004013T*	N/A
	BOTTLENOSE NOZZLE	75004018	N/A
	<b>NOTE: * DESIGNATES NOZZLE INSULATOR INSTALLED SEE NOZZLE DETAIL SHEET FOR ADDITIONAL STYLES AND</b>		
2	NOZZLE INSULATOR	75001738	75001738
3	CONTACT TIP .030 (.8mm)	75030014	75030014
	CONTACT TIP .035 (.9mm)	75035014	75035014
	CONTACT TIP .040 (1.0mm)	75040014	75040014
	CONTACT TIP .045 (1.2mm)	75045014	75045014
	CONTACT TIP .052 (1.4mm)	75052014	75052014
	CONTACT TIP .062 (1.6mm)	75062014	75062014
	CONTACT TIP .078 (2.0mm)	75078014	75078014
	CONTACT TIP .093 (2.4mm)	75093014	75093014
4	GAS DIFFUSER, STANDARD	75004033	75004033
	GAS DIFFUSER, SHORT	75004033S	75004033S
	GAS DIFFUSER, LONG	75004033L	75004033L
	GAS DIFFUSER, X-LONG	75004033XL	75004033XL
5	INSULATING WASHER	75001004	75001004
6	GOOSENECK, 60 DEGREE –GW SERIES	NA	75006036
	GOOSENECK, 45 DEGREE- GW SERIES	NA	75006035
	GOOSENECK, 180 DEGREE- PGRIP	75005051	75006051
	GOOSENECK, 22 DEGREE- PGRIP	75005052	75006052
	GOOSENECK, 45 DEGREE- PGRIP	75005053	75006053
7	GUN HANGER <i>(Optional)</i>	75000009	75000009
8	HANDLE ASSEMBLY – STD.	NA	75000003
	HANDLE ASSEMBLY – PISTOL GRIP	75000003P	75000003P
	HANDLE ASSEMBLY – EXT. TRIGGER	NA	75000003-ET
	HANDLE TOP – STD.	NA	75000006
	HANDLE TOP – DUAL SCHEDULE	NA	75000006-SW
	HANDLE BOTTOM – STD.	NA	75000007
	HANDLE BOTTOM – EXT. TRIGGER	NA	75000007-ET
	HANDLE SCREWS – STD (4 REQUIRED)	NA	75000008
	HANDLE SCREW- PGRIP (6 REQUIRED)	75000008P	75000008P
NS	SWITCH ASSY – DUAL SCHEDULE	NA	75000017
NS	SWITCH ASSY. – MULTI-SCHEDULE	NA	75000018
NS	DS/MS SWITCH CONNECTORS	NA	75007018
9	CABLE SUPPORT BOOT or SPRING	75002005	75006033
10	10' POWER CABLE ASSEMBLY	75010407	75010607
	12' POWER CABLE ASSEMBLY	75012407	75012607
	15' POWER CABLE ASSEMBLY	75015407	75015607
	20' POWER CABLE ASSEMBLY	75020407	75020607
11	2 PIECE ADAPTOR SUPPORT	75077012	75077012
NS	ADAPTOR SCREW	75077011	75077011
12	DIR CON ADAPT BLK	75006148-DC	75006148-DC
	EURO ADAPT BLOCK	75006148	75006148
13	MILLER DIR CON FEEDER PLUG	37577705	37577705
	OTC / DAIHEN DIR CON FEEDER PLUG	37577700	37577700
	OTC DP SERIES DIR CON FEEDER PLUG	37577701	37577701
	LINCOLN LN7 DIR CON FEEDER PLUG	37577832	37577832
	PANASONIC DIR CON FEEDER PLUG	37577999	37577999
	TWECO #4 DIR CON FEEDER PLUG	37577699	37577699
	TWECO #5 DIR CON FEEDER PLUG	37577930	37577930
NS	MILLER O-RING	37577102	37577102
NS	TWECO #4 O-RING	37677102	37677102
NS	TWECO #5 O-RING	75000021	75000021
NS	CONTROL CABLE, MILLER	37577201	37577201
NS	CONTROL CABLE, LINCOLN	37777200	37777200
NS	CONTROL CABLE, OTC	37777250	37777250
NS	CONTROL CABLE, TWECO	37677200	37677200

NO.	DESCRIPTION	450PG	607
NS	GAS HOSE – ORDER PER FOOT	38577087	38577087
NS	TYPE B GAS NUT	38677145	38677145
NS	TYPE B GAS NIPPLE	38677144	38677144
NS	INERT GAS NUT	38677141	38677141
NS	INERT GAS NIPPLE	38677142	38677142
14	TRIGGER SWITCH ASSY-STD.	NA	75000004
15	TRIGGER SWITCH ASSY- PISTOL GRIP	75000011P	75000011P
16	EURO ADAPT NUT	75077014	75077014
17	TRIGGER WIRE CONNECTOR	75077024	75077024
18	BUTT SPLICE	75077066	75077066
19	8.7mm HOSE CLAMP	38577105	38577105
20	WATER HOSE OUT – REDORDER PER FOOT	75099026	75099026
21	QUICK DISCONNECT - MALE	38660000	38660000
22	WIRE/GAS CONDUIT – ORDER PER FOOT	NA	75099600
23	CONDUIT CLAMP	NA	38577108
24	KEVLAR CORD – ORDER PER FOOT	NA	75099001
25	WATER-COOLED POWER CABLE – 10'	NA	75006010
	WATER-COOLED POWER CABLE – 12'	NA	75006012
	WATER-COOLED POWER CABLE – 15'	NA	75006015
	WATER-COOLED POWER CABLE – 20'	NA	75006001
26	WATER HOSE IN – BLUE ORDER PER FOOT	75099025	75099025
27	TRIGGER WIRE – ORDER PER FOOT	NA	75099770
28	REAR SUPPORT SPRING	75060335	75060335
29	EXTENDED TRIGGER	NA	75000005-E
30	TRIGGER SCREW	NA	75000013
31	.023-.030 LINER, 10FT – T STYLE	75010215T	75010215T
	.023-.030 LINER, 15FT – T STYLE	75015215T	75015215T
	.035-.045 LINER, 10FT – T STYLE	75010222T	75010222T
	.035-.045 LINER, 15FT – T STYLE	75015222T	75015222T
	.035-.045 LINER, 25FT – T STYLE	75025222T	75025222T
	.045-1/16 LINER, 10FT – T STYLE	75010228T	75010228T
	.045-1/16 LINER, 15FT – T STYLE	75015228T	75015228T
	.045-1/16 LINER, 25FT – T STYLE	75025228T	75025228T
	5/64-3/32 LINER, 10FT – T STYLE	75010229T	75010229T
	5/64-3/32 LINER, 15FT – T STYLE	75015229T	75015229T
	5/64-3/32 LINER, 25FT – T STYLE	75025229T	75025229T
32	.023-.030 LINER, 10FT – EURO STYLE	75010215	75010215
	.023-.030 LINER, 15FT – EURO STYLE	75015215	75015215
	.035-.045 LINER, 10FT – EURO STYLE	75010222	75010222
	.035-.045 LINER, 15FT – EURO STYLE	75015222	75015222
	.035-.045 LINER, 25FT – EURO STYLE	75025222	75025222
	.045-1/16 LINER, 10FT – EURO STYLE	75010228	75010228
	.045-1/16 LINER, 15FT – EURO STYLE	75015228	75015228
	.045-1/16 LINER, 25FT – EURO STYLE	75025228	75025228
	5/64-3/32 LINER, 10FT – EURO STYLE	75010229	75010229
	5/64-3/32 LINER, 15FT – EURO STYLE	75015229	75015229
	5/64-3/32 LINER, 25FT – EURO STYLE	75025229	75025229
NS	EASY STYLE LINER .023-.030 10FT	75010215-FL	75010215-FL
NS	EASY STYLE LINER .023-.030 15FT	75015215-FL	75015215-FL
NS	EASY STYLE LINER .035-.045 10FT	75010222-FL	75010222-FL
NS	EASY STYLE LINER .035-.045 15FT	75015222-FL	75015222-FL
NS	EASY STYLE LINER .035-.045 25FT	75025222-FL	75025222-FL
NS	EASY STYLE LINER .045-1/16 10FT	75010228-FL	75010228-FL
NS	EASY STYLE LINER .045-1/16 15FT	75015228-FL	75015228-FL
NS	EASY STYLE LINER .045-1/16 25FT	75025228-FL	75025228-FL
NS	EASY STYLE LINER 5/64-3/32 10FT	75010229-FL	75010229-FL
NS	EASY STYLE LINER 5/64-3/32 15FT	75015229-FL	75015229-FL
NS	EASY STYLE LINER 5/64-3/32 25FT	75025229-FL	75025229-FL
NS	EASY LINER RETAINER – T STYLE	75077052-FL	75077052-FL
NS	EASY LINER RETAINER – T STYLE	75077041-FL	75077041-FL



# AMERICAN WELDQUIP

1375 Wolf Creek Trail – P.O. Box 397  
Sharon Center, Ohio 44274  
330-239-0317 Telephone / 800-949-9353 Fax

